



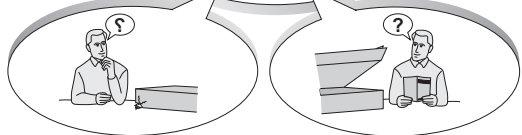
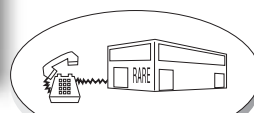
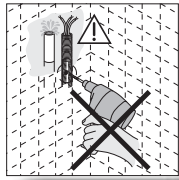
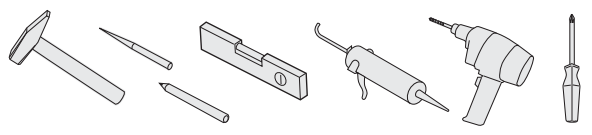
Complimenti per aver scelto un Sistema Doccia **RARE** e grazie per averci accordato la Vostra fiducia.
Le cabine doccia **RARE** sono tecnicamente all'avanguardia e sono concepite in una vasta gamma di modelli e finiture per venire incontro alle Vostre specifiche esigenze.
Affinchè possiate godere di tutti i pregi di queste cabine doccia Vi invitiamo a leggere con attenzione questo libretto di istruzioni.

Cordiali saluti
RARE CABINE DOCCIA

Thank You very much for Your choose. When you buy a RARE, you not only become the proud owner of a new Shower System.

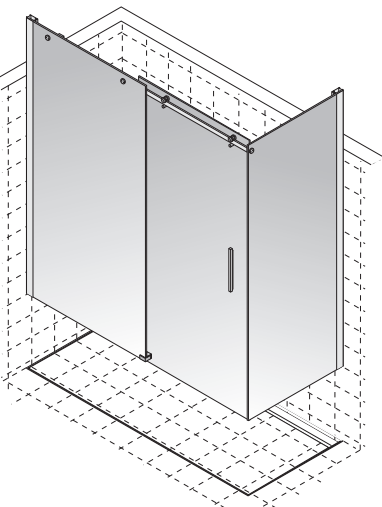
The high quality of its manufacturing and RARE comprehensive service ensure that your requirements are met and that your needs are always properly catered for.

Best Regards.
RARE SHOWER CABINET



Istruzioni di montaggio Assembling instructions

RARE

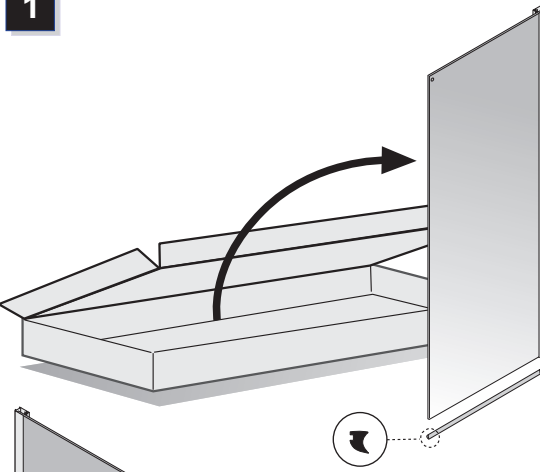


Serie **A16AS**

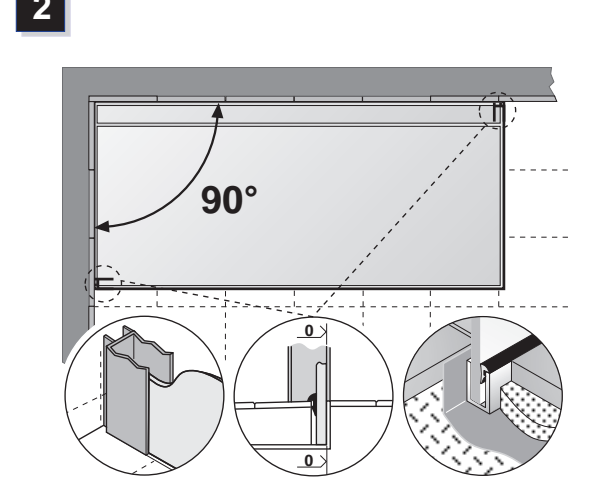
Piatto AD HOC - profilo SINGLE FRAME

IS_A16AS_0619

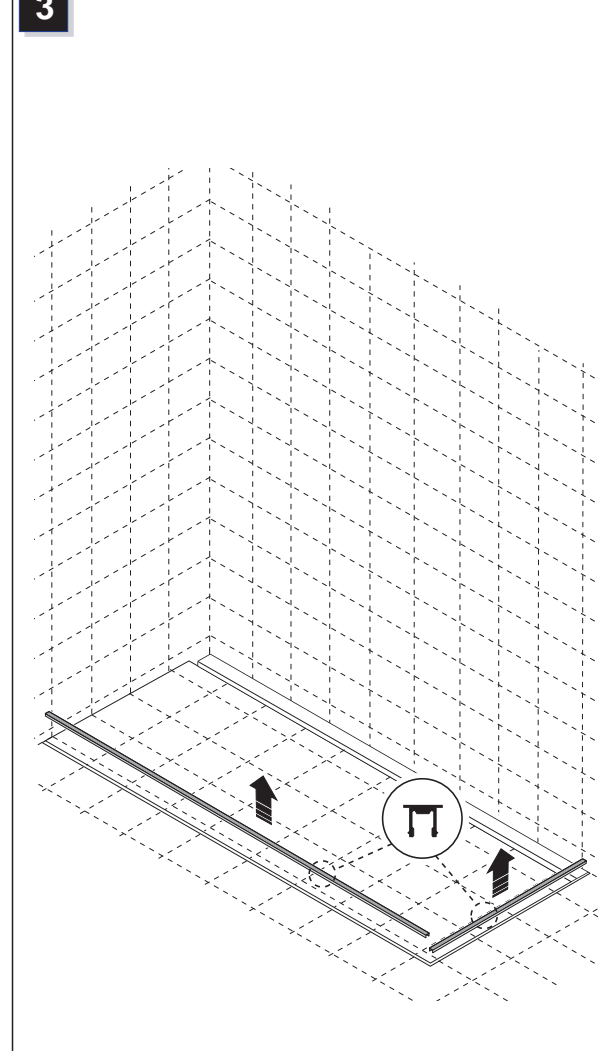
1



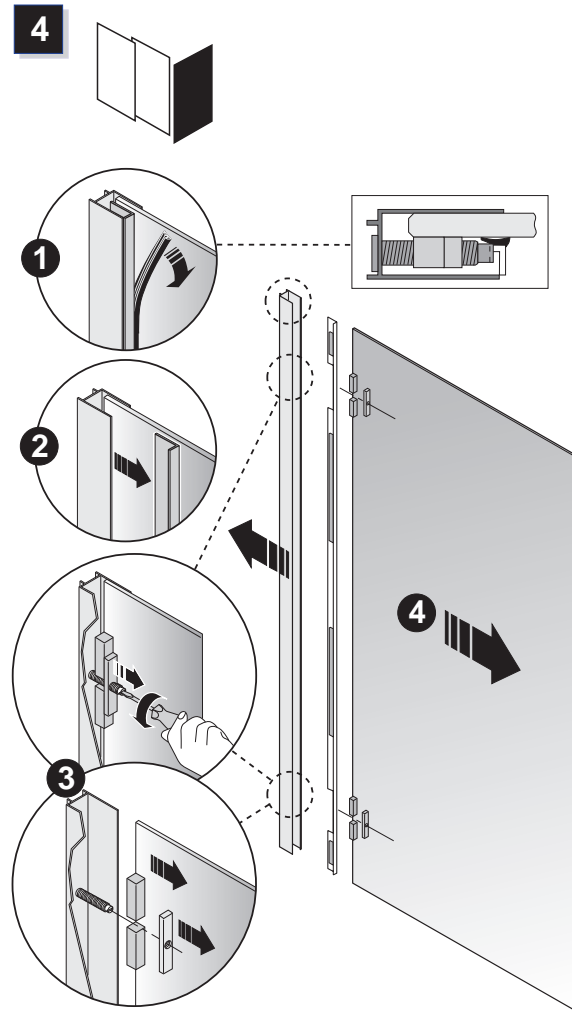
2



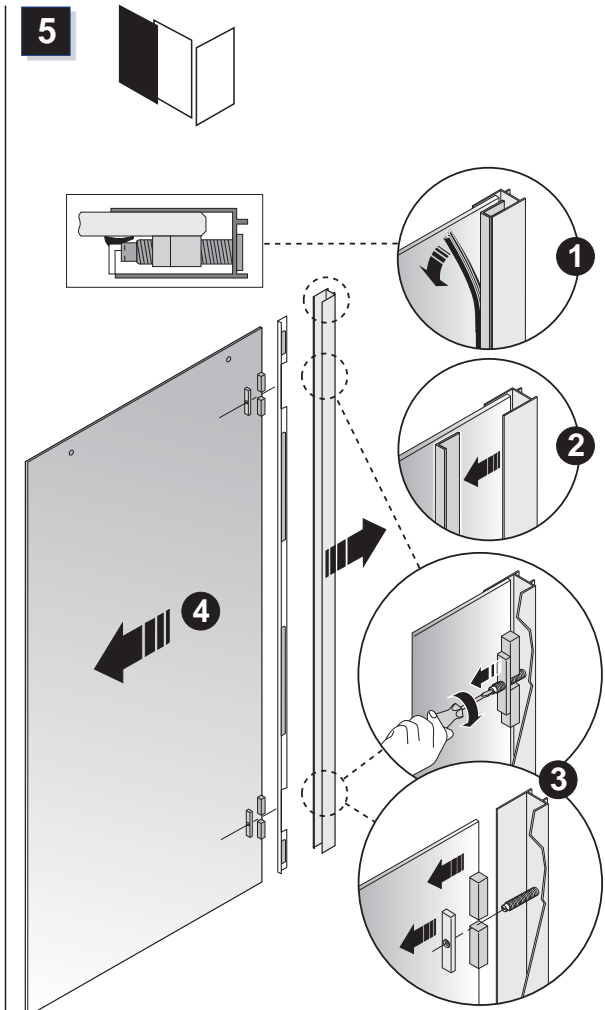
3



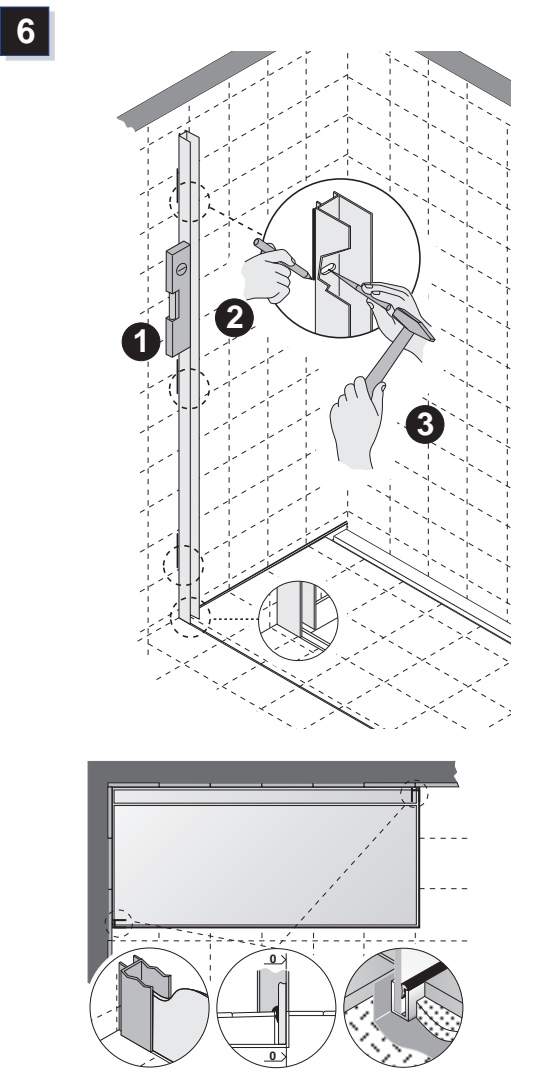
4



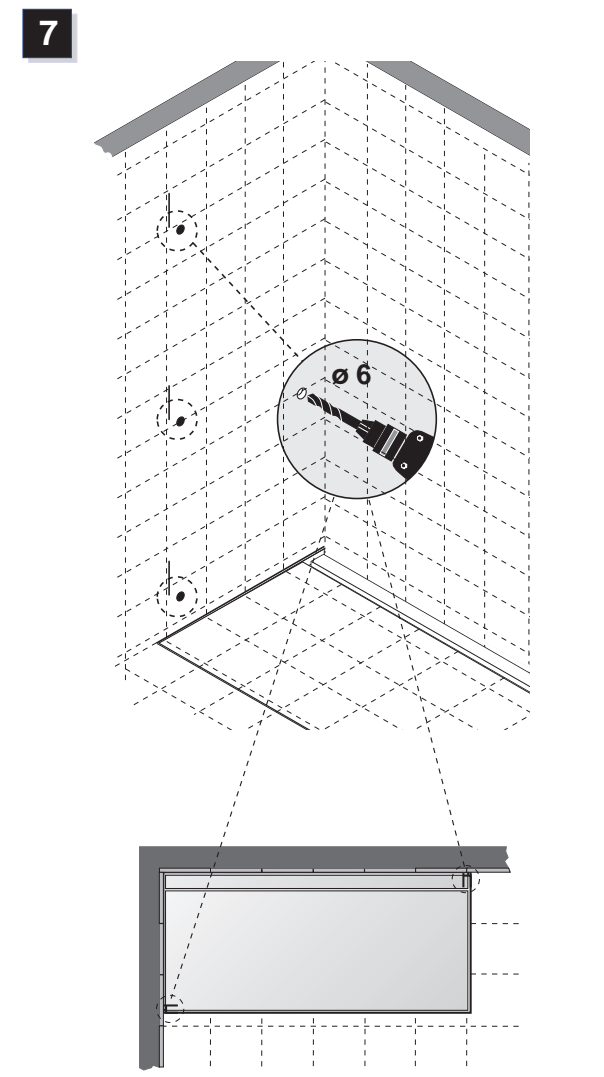
5



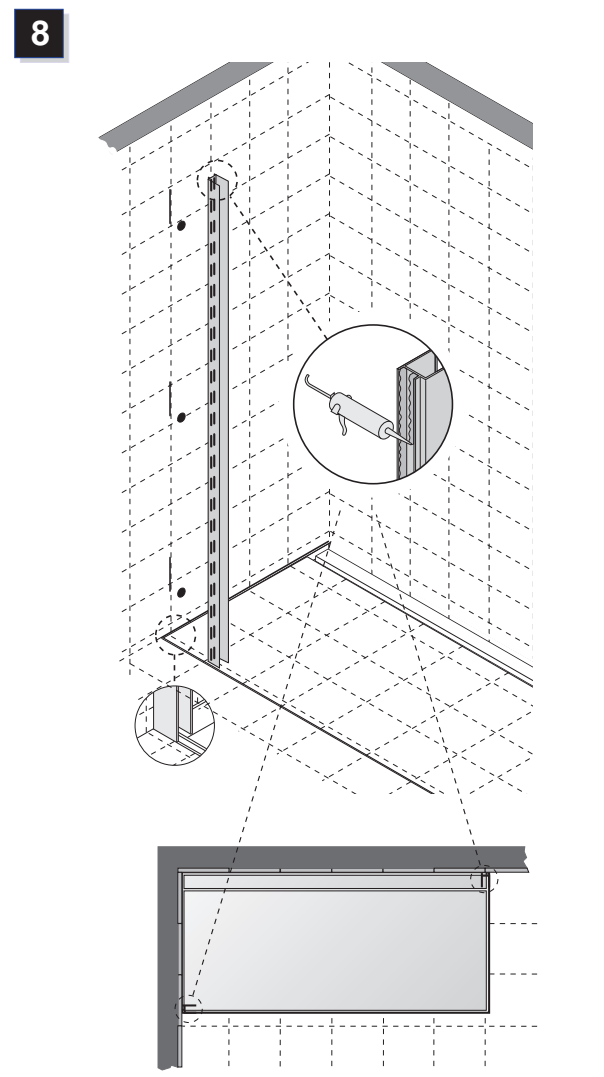
6



7



8



13

1

2

3

14




Diagram 14 illustrates the mounting of the front panel. The top section shows a close-up of a screw being inserted into a hole in the front panel, with an inset showing the screw and a hex key. The bottom section shows the front panel being attached to the main unit, with dashed lines indicating the mounting points.

15

Diagram 15 illustrates the final step of mounting the door to the frame. The diagram is divided into four numbered steps:

- 1**: The door is aligned with the frame, and the mounting bracket is positioned over the pre-drilled hole.
- 2**: A screw is inserted into the pre-drilled hole in the door panel.
- 3**: The screw is tightened, securing the door to the frame.
- 4**: The door is fully aligned with the frame, and the screw is tightened further to ensure a secure fit.

16

Diagram 16 illustrates the step of attaching the top of the cabinet to the wall. The main view shows the cabinet being mounted to a wall using screws. An inset shows a close-up of the top edge where a screw is being inserted into a pre-drilled hole. Another inset shows a close-up of the corner bracket being attached to the side panel.

17

Diagram 17 illustrates the final step of mounting the door to the frame. The main illustration shows the door being aligned with the frame. The callouts provide detailed views of the hinge installation:

- Callout 1:** Shows a hinge being attached to the door.
- Callout 2:** Shows a hinge being attached to the frame.
- Callout 3:** Shows a hinge being attached to the door.
- Callout 4:** Shows a hinge being attached to the frame.
- Callout 5:** Shows a hinge being attached to the door.
- Callout 6:** Shows a hinge being attached to the frame.
- Callout 7:** Shows a hinge being attached to the door.

18

19

The diagram illustrates the installation of a door threshold. The main image shows a door frame with a gap of 19mm. Below it, seven numbered steps (1-7) illustrate the installation process:

1. Inserting the threshold into the gap.
2. Pushing the threshold down.
3. Tightening the screw.
4. Pushing the threshold down.
5. Tightening the screw.
6. Pushing the threshold down.
7. Tightening the screw.